

WHAT SHOPS ARE YOU VISITING TODAY?

Tell us where you're going today out of all the shops in the Centre!



WHAT'S IN YOUR BAG?

What are you buying today? What's your favourite item?



CAN YOU FIND THE BURTON COOPER STATUE?

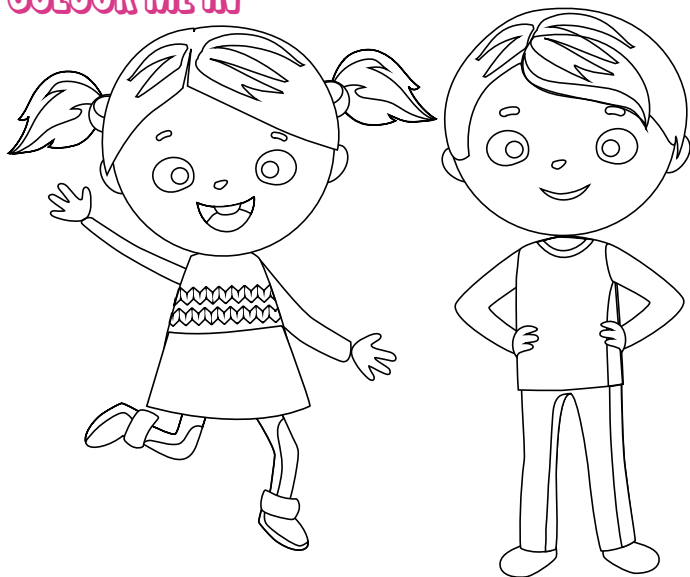
Write down whereabouts you found him.

Shopping List



MY SHOPPING DAY

COLOUR ME IN



DESIGN YOUR OWN 'SHOPPING CENTRE' LOGO

Design the logo of your very own shopping centre!
What colours will you use?

A large dashed rectangular box intended for a child to draw their own shopping centre logo.


TODAY I WENT TO THE SHOPS AND I SAW...

A.....	C.....	M.....	S.....	Y.....
B.....	H.....	N.....	T.....	Z.....
C.....	I.....	O.....	U.....	
D.....	J.....	P.....	V.....	
E.....	K.....	Q.....	W.....	
F.....	L.....	R.....	X.....	





FIND THE 13 DIFFERENCES

Gloria the Giraffe is on her way to the shops.
Can you spot the 13 differences? Circle the ones you can see.



HOW MANY?

COUNT THE SIMILAR
ANIMALS AND WRITE THE
NUMBER



























COLOURING IN SHEET

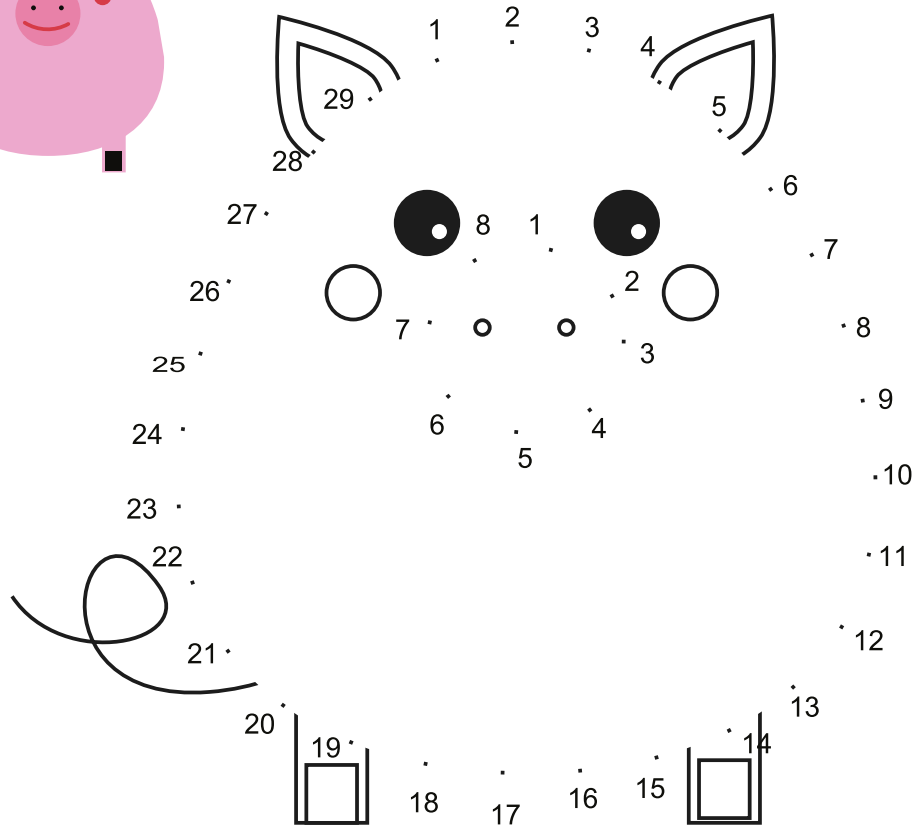
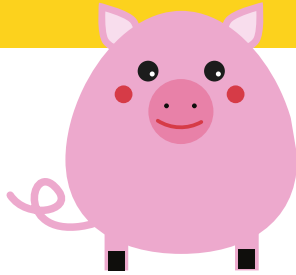


CROSSWORD AFRICAN ANIMALS



1. WILDEBEEST 2. GIRAFFE 3. ELEPHANT
4. KUDU 5. ZEBRA 6. LION 7. HARE
8. RHINOCEROS 9. HIPPO 10. OSTRICH

CONNECT THE DOTS



HOW MANY OF THE DOUGHNUTS ARE PINK,
BLUE & YELLOW?

